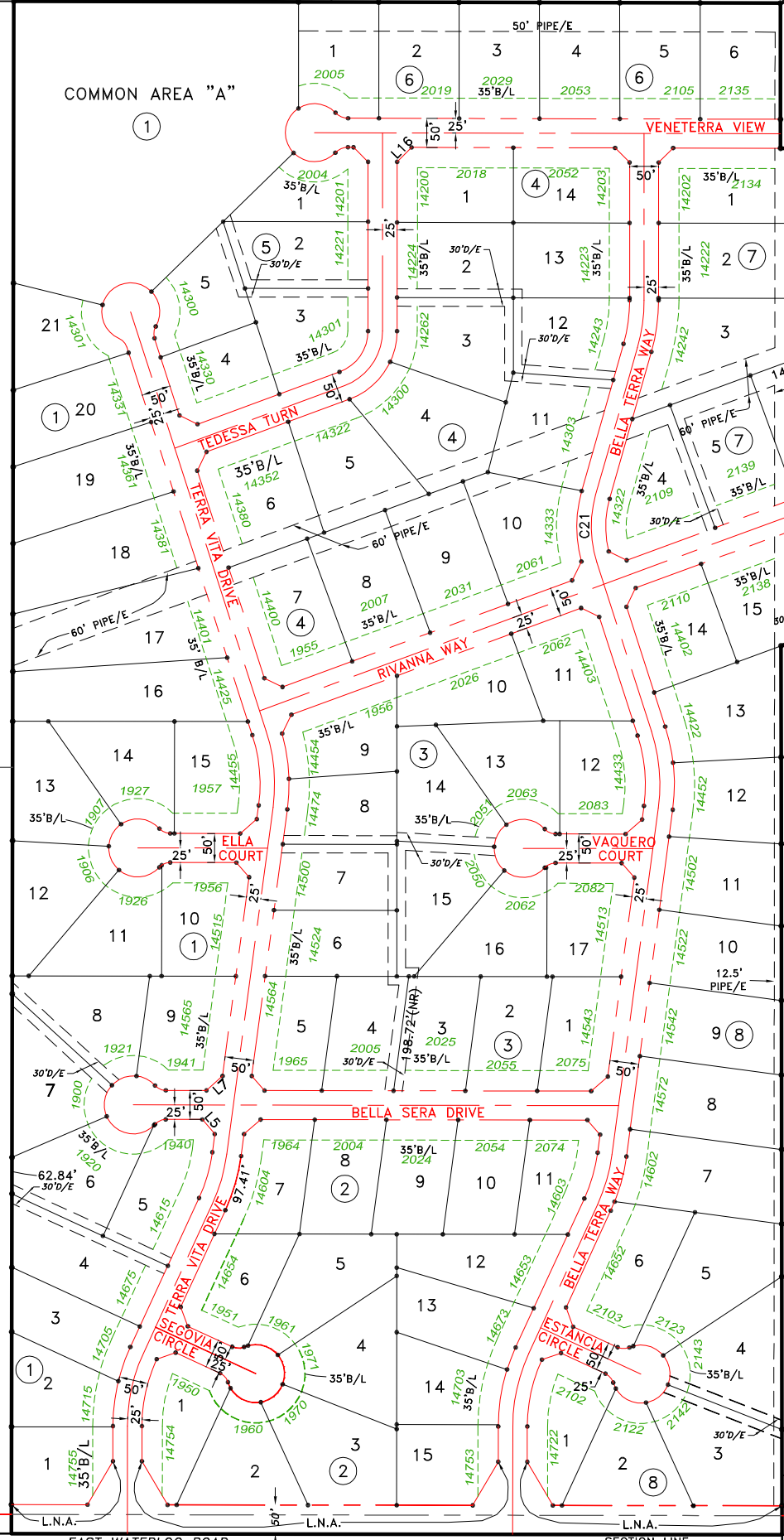
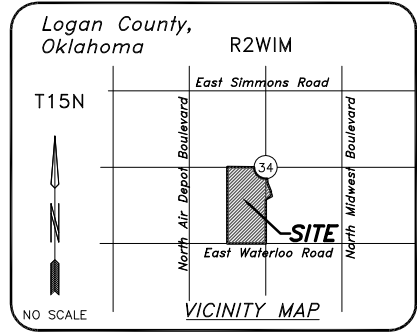


BELLA TERRA SECTION 1

A PART OF THE S1/2. SECTION 34, T15N, R2W.I.M., LOGAN COUNTY, OKLAHOMA

1/4 SECTION LINE



**M&R DEVELOPMENT
COMPANY, L.L.C.
2701 COLTRANE PLACE
SUITE #6
EDMOND, OKLAHOMA
73034**



JIVIDEN AND COMPANY, P.L.L.C.
PROFESSIONAL SURVEYING SERVICES
13501 Eastern Avenue
Oklahoma City, Oklahoma 73131
C.A. 4151 - Expire June 30, 2007
Mob. (405) 740-3226 Office (405) 25U-RVEY
Fax (405) 478-3272 (405) 278-7839
<http://www.jacsurvey.com>

33' STATUTORY RIGHT-OF-WAY

EAST WATERLOO ROAD

SECTION LINE